

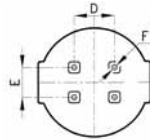
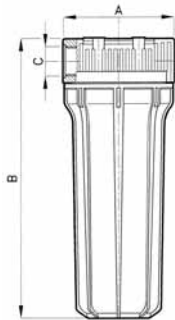
FP2 standard

TECHNICAL FEATURES

Head:	PP with brass inserts
Sump:	transparent SAN – PP white
O.RING:	NBR 70 Sh
Working pressure:	8 bar max
Burst pressure:	35 bar max
Working temperature:	0°C + 50°C min/max
Capacity (empty) at 2 bar:	1/2" F 106,60 lt/min - 3/4" F 108,50 lt/min - 1" F 105,60 lt/min 1" 1/4 F 230 lt/min - 1" 1/2 F 230 lt/min
Life test:	200.000 cycles from 0-10 bar

FP2 FILTER CARTRIDGE HOUSINGS WITH BRASS INSERTS AND TRANSPARENT SAN SUMP

CODE	MOD	HEIGHT	INLET/OUTLET	DIMENSIONS		QUANTITY	kgs	VOLUME
				c	a x b (mm)			
A1010010	FP2	5"	1/2" F	122	x 174	24	18,59	0,112
A1010020	FP2	7"	1/2" F	122	x 226	12	11,65	0,091
A1010030	FP2	9" 3/4	1/2" F	122	x 294	12	13,20	0,091
A1010040	FP2	5"	3/4" F	122	x 174	24	19,00	0,112
A1010050	FP2	7"	3/4" F	122	x 226	12	11,85	0,091
A1010060	FP2	9" 3/4	3/4" F	122	x 294	12	13,36	0,091
A1010070	FP2	5"	1" F	122	x 179	24	19,55	0,112
A1010080	FP2	7"	1" F	122	x 231	12	12,11	0,091
A1010090	FP2	9" 3/4	1" F	122	x 299	12	13,60	0,091
A1010100	FP2	5"	1" 1/4 F	122	x 189	24	21,40	0,112
A1010110	FP2	7"	1" 1/4 F	122	x 241	12	13,00	0,091
A1010120	FP2	9" 3/4	1" 1/4 F	126	x 319	12	14,66	0,091
A1010130	FP2	9" 3/4	1" 1/2 F	126	x 325	12	15,17	0,091



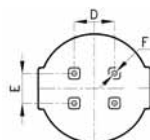
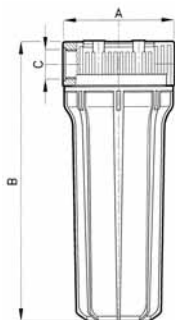
D: 44
E: 33
F: ø4

Designed to hold cartridges:

5" 7" 9" 3/4 20"

FP2 FILTER CARTRIDGE HOUSINGS WITH BRASS INSERTS AND OPAQUE WHITE SUMP

CODE	MOD	HEIGHT	INLET/OUTLET	DIMENSIONS		QUANTITY	kgs	VOLUME
				c	a x b (mm)			
A1040010	FP2	5"	1/2" F	122	x 174	24	19,29	0,112
A1040020	FP2	7"	1/2" F	122	x 226	12	12,05	0,091
A1040030	FP2	9" 3/4	1/2" F	122	x 294	12	13,67	0,091
A1040040	FP2	20"	1/2" F	122	x 565	6	10,18	0,108
A1040050	FP2	5"	3/4" F	122	x 174	24	19,70	0,112
A1040060	FP2	7"	3/4" F	122	x 226	12	12,25	0,091
A1040070	FP2	9" 3/4	3/4" F	122	x 294	12	13,83	0,091
A1040080	FP2	20"	3/4" F	122	x 565	6	10,26	0,108
A1040090	FP2	5"	1" F	122	x 179	24	20,25	0,112
A1040100	FP2	7"	1" F	122	x 231	12	12,41	0,091
A1040110	FP2	9" 3/4	1" F	122	x 299	12	14,07	0,091
A1040120	FP2	20"	1" F	122	x 570	6	10,40	0,108
A1040130	FP2	5"	1" 1/4 F	126	x 189	24	22,10	0,112
A1040140	FP2	7"	1" 1/4 F	126	x 241	12	13,40	0,091
A1040150	FP2	9" 3/4	1" 1/4 F	126	x 319	12	15,13	0,091
A1040160	FP2	20"	1" 1/4 F	126	x 580	6	10,90	0,108
A1040170	FP2	9" 3/4	1" 1/2 F	126	x 325	12	15,64	0,091
A1040180	FP2	20"	1" 1/2 F	126	x 586	6	11,00	0,108



D: 44
E: 33
F: ø4

FP2 standard

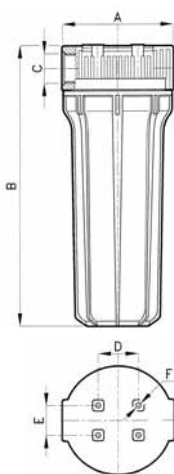
TECHNICAL FEATURES

Head:	PP without brass inserts, blow-off valve in acetyl resin
Sump:	transparent SAN – PP white
O.RING:	NBR 70 Sh
Working pressure:	8 bar max
Burst pressure:	35 bar max
Working temperature:	0°C + 50°C min/max
Capacity (empty) at 2 bar:	1/4" F 32,83 lt/min - 3/8" F 86,70 lt/min - 1/2" F 106,60 lt/min 3/4" F 108,50 lt/min - 1" F 105,60 lt/min
Life test:	200.000 cycles from 0-10 bar

FP2 FILTER CARTRIDGE HOUSING WITHOUT BRASS INSERTS AND TRANSPARENT SAN SUMP



CODE	MOD	HEIGHT	INLET/OUTLET		DIMENSIONS	QUANTITY	kgs	VOLUME
			c	a x b (mm)				
A1020010	FP2	5"	1/4" F	118 x 170	24	16,60	0,112	
A1020020	FP2	7"	1/4" F	118 x 225	12	10,66	0,091	
A1020030	FP2	9" 3/4	1/4" F	118 x 302	12	12,17	0,091	
A1020040	FP2	5"	3/8" F	118 x 170	24	16,60	0,112	
A1020050	FP2	7"	3/8" F	118 x 225	12	10,66	0,091	
A1020060	FP2	9" 3/4	3/8" F	118 x 302	12	12,17	0,091	
A1020070	FP2	5"	1/2" F	122 x 178	24	18,90	0,112	
A1020080	FP2	7"	1/2" F	122 x 233	12	11,76	0,091	
A1020090	FP2	9" 3/4	1/2" F	122 x 310	12	13,28	0,091	
A1020100	FP2	5"	3/4" F	122 x 185	24	18,40	0,112	
A1020110	FP2	7"	3/4" F	122 x 240	12	11,52	0,091	
A1020120	FP2	9" 3/4	3/4" F	122 x 317	12	13,04	0,091	
A1020130	FP2	5"	1" F	122 x 193	24	19,16	0,112	
A1020140	FP2	7"	1" F	122 x 248	12	11,91	0,091	
A1020150	FP2	9" 3/4	1" F	122 x 325	12	13,04	0,091	



D: 44
E: 33
F: ø4

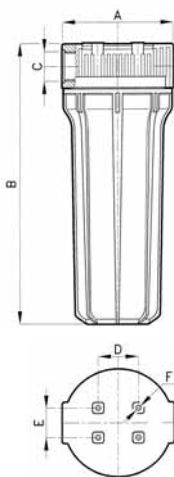
Designed to hold cartridges:

5" 7" 9" 3/4 20"

FP2 FILTER CARTRIDGE HOUSING WITHOUT BRASS INSERTS AND OPAQUE WHITE SUMP



CODE	MOD	HEIGHT	INLET/OUTLET		DIMENSIONS	QUANTITY	kgs	VOLUME
			c	a x b (mm)				
A1030010	FP2	5"	1/4" F	118 x 170	24	17,30	0,112	
A1030020	FP2	7"	1/4" F	118 x 225	12	11,06	0,091	
A1030030	FP2	9" 3/4	1/4" F	118 x 302	12	12,64	0,091	
A1030040	FP2	20"	1/4" F	118 x 562	6	9,68	0,108	
A1030050	FP2	5"	3/8" F	118 x 170	24	17,30	0,112	
A1030060	FP2	7"	3/8" F	118 x 225	12	11,06	0,091	
A1030070	FP2	9" 3/4	3/8" F	118 x 302	12	12,64	0,091	
A1030080	FP2	20"	3/8" F	118 x 562	6	9,68	0,108	
A1030090	FP2	5"	1/2" F	122 x 178	24	19,60	0,112	
A1030100	FP2	7"	1/2" F	122 x 233	12	12,16	0,091	
A1030110	FP2	9" 3/4	1/2" F	122 x 310	12	13,75	0,091	
A1030120	FP2	20"	1/2" F	122 x 570	6	10,24	0,108	
A1030130	FP2	5"	3/4" F	122 x 185	24	19,10	0,112	
A1030140	FP2	7"	3/4" F	122 x 240	12	11,92	0,091	
A1030150	FP2	9" 3/4	3/4" F	122 x 317	12	13,52	0,091	
A1030160	FP2	20"	3/4" F	122 x 577	6	10,12	0,108	
A1030170	FP2	5"	1" F	122 x 193	24	19,76	0,112	
A1030180	FP2	7"	1" F	122 x 248	12	12,31	0,091	
A1030190	FP2	9" 3/4	1" F	122 x 325	12	13,51	0,091	
A1030200	FP2	20"	1" F	122 x 585	6	10,32	0,108	



D: 44
E: 33
F: ø4

FP3 standard

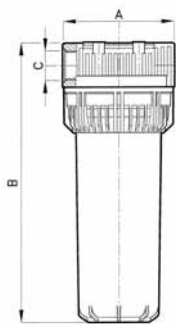
TECHNICAL FEATURES

Head:	PP with brass inserts
Sump:	transparent SAN – PP white
Ring:	PP
O.RING:	NBR 70 Sh
Working pressure:	8 bar max
Burst pressure:	35 bar max
Working temperature:	0°C + 50°C min/max
Capacity (empty) at 2 bar:	1/2" F 106,60 lt/min - 3/4" F 108,50 lt/min - 1" F 105,60 lt/min 1 1/4" F 230 lt/min - 1 1/2" F 230 lt/min
Life test:	200.000 cycles from 0-10 bar

FP3 FILTER CARTRIDGE HOUSING WITH BRASS INSERT AND TRANSPARENT SUMP



CODE	MOD	HEIGHT	INLET/OUTLET		DIMENSIONS	QUANTITY	kgs	VOLUME
			c	a x b (mm)				
A2010010	FP3	5"	1/2" F	122 x 174	24	18,22	0,112	
A2010020	FP3	7"	1/2" F	122 x 226	12	11,11	0,091	
A2010030	FP3	9 3/4"	1/2" F	122 x 294	12	12,15	0,091	
A2010040	FP3	20"	1/2" F	122 x 565	6	9,53	0,108	
A2010050	FP3	5"	3/4" F	122 x 174	24	18,06	0,112	
A2010060	FP3	7"	3/4" F	122 x 226	12	11,07	0,091	
A2010070	FP3	9 3/4"	3/4" F	122 x 294	12	12,32	0,091	
A2010080	FP3	20"	3/4" F	122 x 565	6	9,62	0,108	
A2010090	FP3	5"	1" F	122 x 179	24	19,24	0,112	
A2010100	FP3	7"	1" F	122 x 231	12	11,40	0,091	
A2010110	FP3	9 3/4"	1" F	122 x 299	12	12,60	0,091	
A2010120	FP3	20"	1" F	122 x 570	6	9,76	0,108	
A2010130	FP3	5"	1 1/4" F	126 x 189	24	21,20	0,112	
A2010140	FP3	7"	1 1/4" F	126 x 241	12	12,43	0,091	
A2010150	FP3	9 3/4"	1 1/4" F	126 x 319	12	13,52	0,091	
A2010160	FP3	20"	1 1/4" F	126 x 580	6	10,27	0,108	
A2010170	FP3	9 3/4"	1 1/2" F	126 x 325	12	13,64	0,091	
A2010180	FP3	20"	1 1/2" F	126 x 586	6	10,32	0,108	



D: 44
E: 33
F: ø4

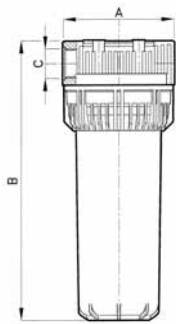
Designed to hold cartridges:

5" 7" 9" 3/4 20"

FP3 FILTER CARTRIDGE HOUSING WITH BRASS INSERT AND OPAQUE WHITE SUMP



CODE	MOD	HEIGHT	INLET/OUTLET		DIMENSIONS	QUANTITY	kgs	VOLUME
			c	a x b (mm)				
A2040010	FP3	5"	1/2" F	122 x 174	24	18,74	0,112	
A2040020	FP3	7"	1/2" F	122 x 226	12	11,41	0,091	
A2040030	FP3	9 3/4"	1/2" F	122 x 294	12	12,15	0,091	
A2040040	FP3	20"	1/2" F	122 x 565	6	9,91	0,108	
A2040050	FP3	5"	3/4" F	122 x 174	24	18,57	0,112	
A2040060	FP3	7"	3/4" F	122 x 226	12	11,37	0,091	
A2040070	FP3	9 3/4"	3/4" F	122 x 294	12	12,32	0,091	
A2040080	FP3	20"	3/4" F	122 x 565	6	10,00	0,108	
A2040090	FP3	5"	1" F	122 x 179	24	19,76	0,112	
A2040100	FP3	7"	1" F	122 x 231	12	11,70	0,091	
A2040110	FP3	9 3/4"	1" F	122 x 299	12	12,60	0,091	
A2040120	FP3	20"	1" F	122 x 570	6	10,14	0,108	
A2040130	FP3	5"	1 1/4" F	126 x 189	24	21,72	0,112	
A2040140	FP3	7"	1 1/4" F	126 x 241	12	12,73	0,091	
A2040150	FP3	9 3/4"	1 1/4" F	126 x 319	12	13,52	0,091	
A2040160	FP3	20"	1 1/4" F	126 x 580	6	10,65	0,108	
A2040170	FP3	9 3/4"	1 1/2" F	126 x 325	12	13,64	0,091	
A2040180	FP3	20"	1 1/2" F	126 x 586	6	10,70	0,108	



D: 44
E: 33
F: ø4

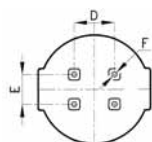
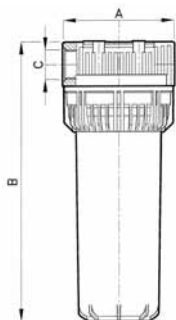
FP3 standard

TECHNICAL FEATURES

Head:	PP without brass inserts, blow-off valve in acetyl resin
Sump:	transparent SAN – PP white
Ring:	PP
O.RING:	NBR 70 Sh
Working pressure:	8 bar max
Burst pressure:	35 bar max
Working temperature:	0°C + 50°C min/max
Capacity (empty) at 2 bar:	1/4" F 32,83 lt/min - 3/8" F 86,70 lt/min - 1/2" F 106,60 lt/min 3/4" F 108,50 lt/min - 1" F 105,60 lt/min
Life test:	200.000 cycles from 0-10 bar

FP3 FILTER CARTRIDGE HOUSING WITHOUT BRASS INSERT AND TRANSPARENT SUMP

CODE	MOD	HEIGHT	INLET/OUTLET	DIMENSIONS		QUANTITY	kgs	VOLUME
				c	a x b (mm)			
A2020010	FP3	5"	1/4" F	118 x 170	24	16,23	0,112	
A2020020	FP3	7"	1/4" F	118 x 225	12	9,96	0,091	
A2020030	FP3	9" 3/4	1/4" F	118 x 302	12	11,16	0,091	
A2020040	FP3	20"	1/4" F	118 x 562	6	9,03	0,108	
A2020050	FP3	5"	3/8" F	118 x 170	24	16,23	0,112	
A2020060	FP3	7"	3/8" F	118 x 225	12	9,96	0,091	
A2020070	FP3	9" 3/4	3/8" F	118 x 302	12	11,16	0,091	
A2020080	FP3	20"	3/8" F	118 x 562	6	9,03	0,108	
A2020090	FP3	5"	1/2" F	122 x 178	24	18,51	0,112	
A2020100	FP3	7"	1/2" F	122 x 233	12	11,09	0,091	
A2020110	FP3	9" 3/4	1/2" F	122 x 310	12	12,29	0,091	
A2020120	FP3	20"	1/2" F	122 x 570	6	9,60	0,108	
A2020130	FP3	5"	3/4" F	122 x 185	24	18,05	0,112	
A2020140	FP3	7"	3/4" F	122 x 240	12	10,83	0,091	
A2020150	FP3	9" 3/4	3/4" F	122 x 317	12	12,02	0,091	
A2020160	FP3	20"	3/4" F	122 x 577	6	9,47	0,108	
A2020170	FP3	5"	1" F	122 x 193	24	18,84	0,112	
A2020180	FP3	7"	1" F	122 x 248	12	11,23	0,091	
A2020190	FP3	9" 3/4	1" F	122 x 325	12	12,45	0,091	
A2020200	FP3	20"	1" F	122 x 585	6	9,67	0,108	



D: 44
E: 33
F: ø4

Designed to hold cartridges:

5" 7" 9" 3/4 20"

FP3 FILTER CARTRIDGE HOUSING WITHOUT BRASS INSERT AND OPAQUE WHITE SUMP

CODE	MOD	HEIGHT	INLET/OUTLET	DIMENSIONS		QUANTITY	kgs	VOLUME
				c	a x b (mm)			
A2030010	FP3	5"	1/4" F	118 x 170	24	16,75	0,112	
A2030020	FP3	7"	1/4" F	118 x 225	12	10,26	0,091	
A2030030	FP3	9" 3/4	1/4" F	118 x 302	12	11,16	0,091	
A2030040	FP3	20"	1/4" F	118 x 562	6	9,41	0,108	
A2030050	FP3	5"	3/8" F	118 x 170	24	16,75	0,112	
A2030060	FP3	7"	3/8" F	118 x 225	12	10,26	0,091	
A2030070	FP3	9" 3/4	3/8" F	118 x 302	12	11,16	0,091	
A2030080	FP3	20"	3/8" F	118 x 562	6	9,41	0,108	
A2030090	FP3	5"	1/2" F	122 x 178	24	19,03	0,112	
A2030100	FP3	7"	1/2" F	122 x 233	12	11,39	0,091	
A2030110	FP3	9" 3/4	1/2" F	122 x 310	12	12,29	0,091	
A2030120	FP3	20"	1/2" F	122 x 570	6	9,98	0,108	
A2030130	FP3	5"	3/4" F	122 x 185	24	18,57	0,112	
A2030140	FP3	7"	3/4" F	122 x 240	12	11,13	0,091	
A2030150	FP3	9" 3/4	3/4" F	122 x 317	12	12,02	0,091	
A2030160	FP3	20"	3/4" F	122 x 577	6	9,85	0,108	
A2030170	FP3	5"	1" F	122 x 193	24	19,36	0,112	
A2030180	FP3	7"	1" F	122 x 248	12	11,53	0,091	
A2030190	FP3	9" 3/4	1" F	122 x 325	12	12,45	0,091	
A2030200	FP3	20"	1" F	122 x 585	6	10,15	0,108	

