



**SANICONDENS® Pro** pumps condensate away from condensing boilers and air conditioners. Small, this powerful pumping unit can be floor or wall mounted.



4,5 m  
50 m

## SANICONDENS® Pro



**SANICONDENS® Pro** comes with an auxiliary external overflow switch that will shut down the appliance or alert the consumer in the event of pump overflow.

Delivered with a complete installation kit

**Possible connections:** gas boilers, refrigerated display and air conditioner

**Waste pipe diameter:** 2 DN 28 mm

**Discharge pipework:** 8/11 mm

**Maximum flow rate:** 342 L/h • **Tank volume:** 2 L

**Electrical power supply:** 220-240 V; 50Hz/60Hz

**Motor power rating:** 60 W

**Maximum current input:** 0,52 A

**Electrical classification:** I

**Sound level:** < 45 dB(A)

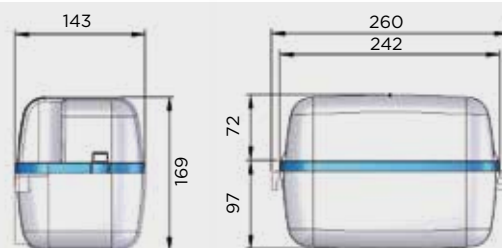
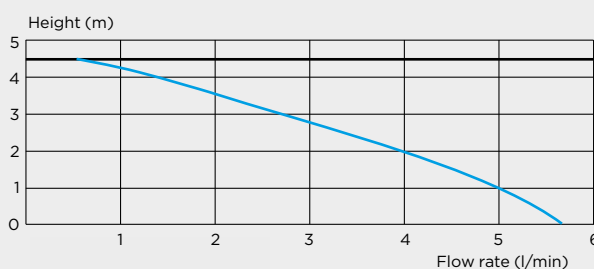
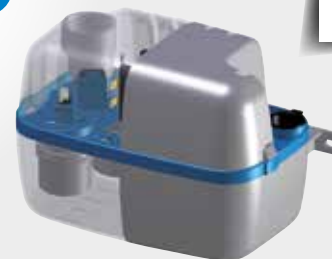
**Weight:** 2.7 kg

**Maximum admissible waste water temperature:**

80°C - S3 15 % (1 min 30 on / 8 min 30 off)

**Index of protection:** IP20

**Supplied with :** wall mount brackets, inlet adapter, discharge adapter (DN 50 mm), 5 m of flexible discharge pipe, 2 m power cord, prewired to an alarm



VERTICAL AND  
HORIZONTAL  
DISCHARGE:  
↑ 4,5 M → 50 M



### BENEFITS

- 2 inlets with one shut-off
- Prewired for possible alarm connection
- The volume of the tank prevents the pump from starting too frequently
- 2 L tank
- Compact
- Easy mounting with dual direction (vertical and horizontal) mountings