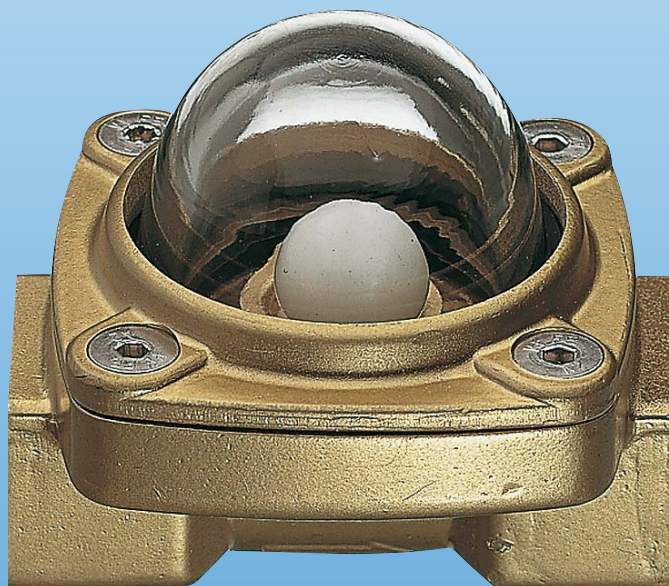




Ball Type Flow Indicator Horizontal Installation



measuring
•
monitoring
•
analysing



- Indication range:
0.05-15...0.14-105 L/min water
- p_{max} 6 bar, t_{max} 120°C
- Connection:
G 1½... G 1, 1/8 NPT...1 NPT
- Material: brass



KOBOLD companies worldwide:

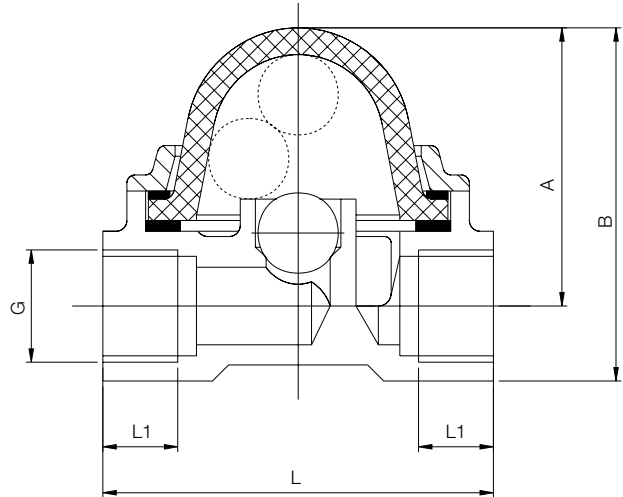
ARGENTINA, AUSTRIA, BELGIUM, CANADA, CHILE, CHINA, CZECHIA,
FRANCE, GERMANY, GREAT BRITAIN, INDIA, INDONESIA, ITALY,
MALAYSIA, MEXICO, NETHERLANDS, POLAND, SINGAPORE, SLOVAKIA,
SPAIN, SWITZERLAND, THAILAND, USA, VENEZUELA, VIETNAM

KOBOLD Messring GmbH
Nordring 22-24
D-65719 Hofheim/Ts.
☎ +49(0)6192 299-0
Fax +49(0)6192 23398
E-Mail: info.de@kobold.com
Internet: www.kobold.com

Model:
DKB

Materials:	DKB-11...	DKB-21...
Housing:	brass (MS-58)	brass (MS-58)
Glass dome:	borosilicate glass	borosilicate glass
Rotating vane:	POM	PTFE
Axle:	brass (MS-58)	brass (MS-58)
Sealing:	EPDM	FPM
Rings:	brass (MS-58)	brass (MS-58)
Screws:	st. steel	st. steel

Dimensions



Connection

G 1/8 R06	G 1/4 R08	G 3/8 R10	G 1/2 R15	G 3/4 R20	G 1 R25
1/8 NPT N06	1/4 NPT N08	3/8 NPT N10	1/2 NPT N15	3/4 NPT N20	1 NPT N25

Model	P _{max}	t _{max}	G	NPT	L1 [mm]	L [mm]	A [mm]	B [mm]	Weight [kg]
DKB-..01H	6 bar	120°C	G 1/8	1/8	8	56	41	50	0.3
DKB-..02H	6 bar	120°C	G 1/4	1/4	10	56	41	50	0.28
DKB-..03H	6 bar	120°C	G 3/8	3/8	14	73	53	67	0.57
DKB-..04H	6 bar	120°C	G 1/2	1/2	14	73	53	67	0.54
DKB-..05H	6 bar	120°C	G 3/4	3/4	16	109	72	94	1.41
DKB-..06H	6 bar	120°C	G 1	1	18	109	72	94	1.30

Order Details (Example: DKB-1101H R06)

Indication range		Model		Connection	
[L/min] water	Δ P* [bar]	DKB-11..	DKB-21..	G-thread	NPT-thread
0.05 - 15	1	DKB-1101H..	DKB-2101H..	R06	N06
0.05 - 20	1	DKB-1102H..	DKB-2102H..	R08	N08
0.06 - 45	1	DKB-1103H..	DKB-2103H..	R10	N10
0.07 - 50	1	DKB-1104H..	DKB-2104H..	R15	N15
0.18 - 105	0.5	DKB-1105H..	DKB-2105H..	R20	N20
0.14 - 105	0.5	DKB-1106H..	DKB-2106H..	R25	N25

* max. flow